

SmartWallBox WebApp Manual

Version 2.0
December 22, 2025



Table of contents

1. Introduction
2. Connecting the module
3. Installation of the WebApp
4. Connecting to WiFi
5. Install WebApp
6. SmartWallBox App Configuration
7. Explanation of menus
8. Reading a song list
9. Example song list
10. Controlling Multiple Jukeboxes

Appendix

- A . Manual IP Settings
- B. Combi module
- C. Troubleshooting

1. Introduction

This manual describes the installation and use of the SmartWallBox WebApp. With this app, you can easily control a jukebox via your smartphone or computer. The app works on iPhone (iOS), Android, and Windows devices.

2. Connecting the module

The SmartWallBox module is connected to the stepper of the jukebox with three wires.



Use the table below to make the correct connections:

| Junction | Description |
|----------|--------------------|
| 24VAC | 24V Supply Voltage |
| Signal | Signal with pulses |
| COM | Mass |

Depending on the jukebox brand and type, the text on the stepper might differ. The cross reference table below shows some examples. If in doubt, please contact us.

| SmartWallbox | Wurlitzer | Rockola | Seeburg | Seeburg | AMI |
|--------------|-----------|----------|---------|---------|------------------|
| SIGNAL | 1 | SIGNAL | SIG | BLU | SIGNAL |
| COMMON | 2 | COM | GND | ORG | A.C. D.C. COMMON |
| 24VAC | 3 | 24V A.C. | 25V | GRN | A.C. |

In addition, there is an optional REJECT connector. This can be used to stop a selection via the SmartWallBox app. The terminals **R1** and **R2** are connected in parallel with the REJECT/CANCEL button of the jukebox. This works for the Seeburg/AMI/Rockola models.

Wurlitzer models with a 2-pole REJECT switch can be connected in the same way. But some Wurlitzer models have a REJECT button with a 3-pin connector. These cannot be connected directly to the SmartWallbox module. Special cables are available here that can be connected to the dummy plug of the amplifier. See the product page on the website for details.

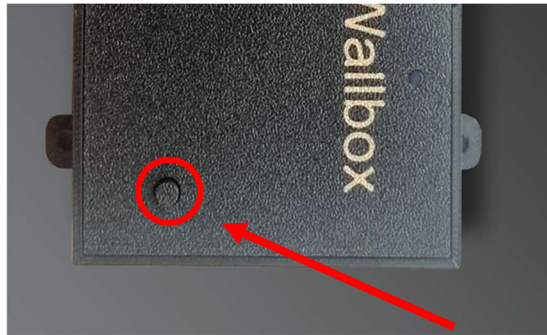
3. Installation of the Web App

The SmartWallBox Webapp can be used on iPhone, Android, and Windows. A separate app is also available for Android in the Play Store.

You can connect the module to an adapter or laptop via USB-C to perform the initial setup. The connection is located on the side of the case. But it is also possible to connect the module directly to the jukebox for configuration.

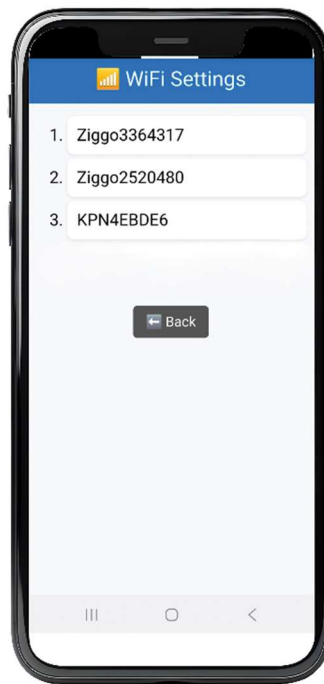
4. Connect to WiFi

The configuration of the module can be done on the smartphone or with a laptop/computer. To connect the module to WiFi, it must first be put into AP (Access Point mode) mode. To do this, press the indicated button on the board.



The module then creates a WiFi network called "**SmartWallBox**". Connect your phone/laptop to this network and then open the web browser. Type the following address into the web browser <http://192.168.4.1>

This will give you the web page below with which you can set up the desired WiFi network.



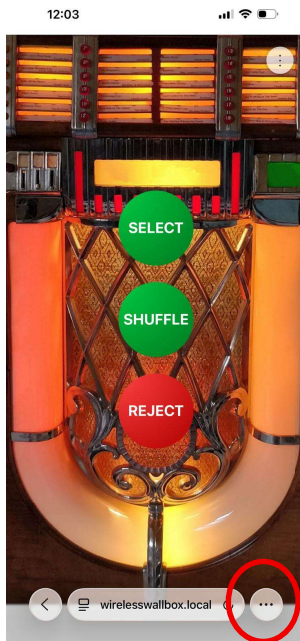
When the settings are saved, the connection to the SmartWallbox WiFi network can be broken. When the module is now restarted, it will automatically connect to the home network.

5. Install WebApp

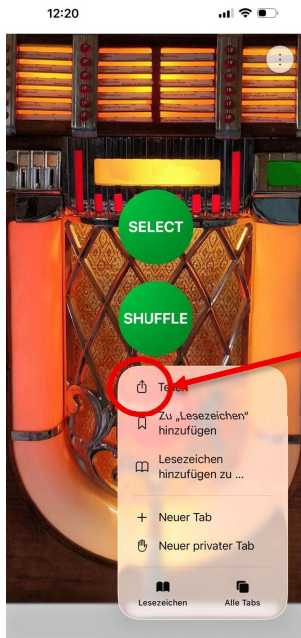
Open the Safari browser and go to the address below to open the WebApp (only works on iPhone):

<http://smartwallbox.local>

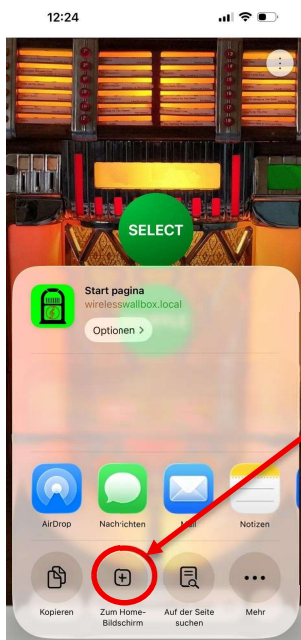
Once the web browser has opened the app, you will see the home screen of the app.



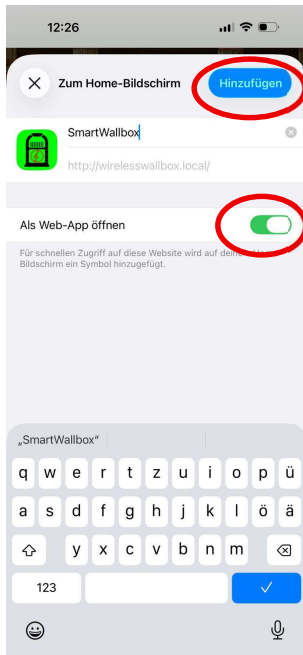
Go to the settings menu of the web-browser.



Open the "Share" menu



Add to your phone's home screen.



Add to the Home Screen

Open as a Web App

Then close the browser. The icon for the SmartWallbox app has now been added to the home screen or one of the other screens. This allows you to open the app, this only works when the SmartWallbox module is on.



Go to Appendix A. if you want to use the WebApp on an Android/Windows device. If the above address does not work on your iPhone, you can also do the Android/Windows installation as described in the Appendix.

6. Configuration of the SmartWallBox app

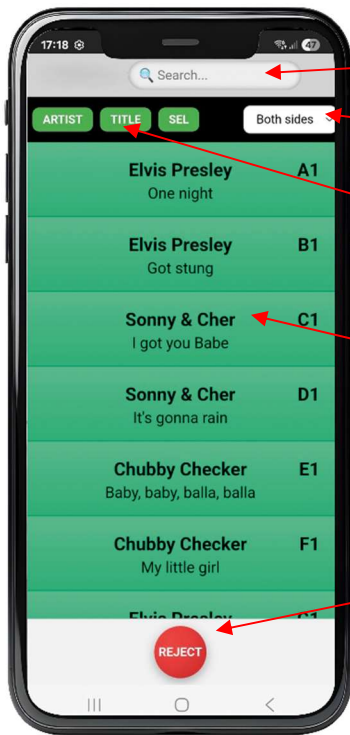
When the module is connected correctly, the app can be opened. Click on the three dots in the top right corner and choose '**Config**' to select your jukebox model. Save the settings before you leave the menu.



Select the right jukebox

Save the configuration

7. Explanation of menus



Search by artist or title

A, B or both sides visible

Sort by Artist, Title, Selection

Play selection

Reject single



Shuffle 1 Song

Shuffle 3 Song

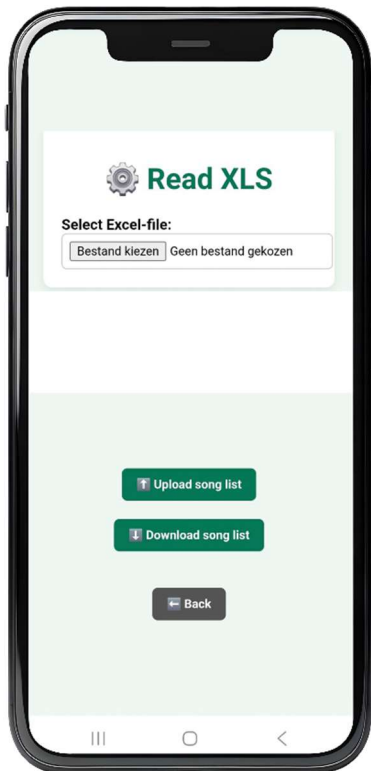
Shuffle 5 Songs

Shuffle only side A or B

8. Import a song list

The selections in the jukebox must be put in an Excel file so that they can be read by the app. After the Excel file has been read, it is stored in the Smartwallbox module.

In the main menu, go to the settings (3 dots at the top right) and select "**Read XLS**". The following screen will now be visible.



Select the XLS file stored on your phone/laptop with the "**Select Excel file**" button.

Press "**Upload song list**" to save the XLS file in the Smartwallbox module.

Now you can go back to the main menu and make a selection.

9. Example song list

The song list is an Excel file. The two supported formats are **.xls** and **.xlsx**. Use a spreadsheet program such as Excel to create the file.

The Excel file should contain the following columns:

| Column | Contents |
|--------|------------------|
| 1 | Selection number |
| 2 | Song titles |
| 3 | Artist |
| 4 | Side (A or B) |

Example Excel file:

| | A | B | C | D |
|----|----|----------------------------|----------------|---|
| 1 | A1 | One night | Elvis Presley | A |
| 2 | B1 | Got stung | Elvis Presley | B |
| 3 | C1 | I got you Babe | Sonny & Cher | A |
| 4 | D1 | It's gonna rain | Sonny & Cher | B |
| 5 | E1 | Baby, baby, balla, balla | Chubby Checker | A |
| 6 | F1 | My little girl | Chubby Checker | B |
| 7 | G1 | Suspicious minds | Elvis Presley | A |
| 8 | H1 | You'll think of me | Elvis Presley | B |
| 9 | J1 | Cinderella | Paul Anka | A |
| 10 | K1 | Kissin' on the phone | Paul Anka | B |
| 11 | L1 | Shake, rattle and roll | Bill Haley | A |
| 12 | M1 | See you later, alligator | Bill Haley | B |
| 13 | N1 | Blue bayou | Roy Orbison | A |
| 14 | P1 | Mean woman blues | Roy Orbison | B |
| 15 | Q1 | Green, green grass of home | Tom Jones | A |
| 16 | R1 | Promise her anything | Tom Jones | B |

More examples of song lists can be downloaded from the website.

<http://www.smartwallbox.nl>

10. Operate multiple jukeboxes

By default, the app is only suitable for operating 1 jukebox. If you want to use multiple Smartwallbox modules for multiple jukeboxes, each SmartWallBox module needs a unique address. Please indicate this when ordering so that a unique web address is created for each module.

<http://smartwallbox.local>

<http://smartwallbox2.local>

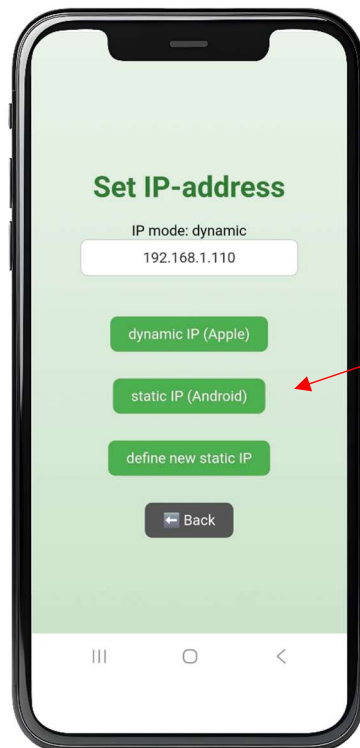
<http://smartwallbox3.local>

Appendix A – Manual IP Settings

Android and Windows devices do not support automatic name recognition via MDNS. Therefore, a fixed IP address must be set for these devices.

Press the button on the SmartWallbox module so that the "SmartWallbox" Wi-Fi network is started.

1. Connect your phone to the '**SmartWallBox**' network. Open the web browser with address <http://192.168.4.1/startup.html>
2. Make sure that the WiFi is set up correctly as described in chapter 4.
3. Now go to the configuration menu (3 dots at the top right) and select the "**Set IP**" menu.
4. The IP address you see now is a dynamic address that is automatically issued by the Router.



Dynamic means that it can be a different address next time. This will not work for Android because you do not have to enter a name but an IP address in your web browser. To ensure that the address does not change, it must become a static address. This can be done by pressing the "**static IP Android**" button.

The static address is now fixed IP address:
192.168.1.211

6. Disconnect the connection to the '**SmartWallBox**' network and restart the module. The module will now log on to the home network with the fixed IP address.
7. Open the web-browser and go to address:

<http://192.168.1.211>

8. As soon as the web browser has opened the app, you will see the home screen. Now go to the settings in your web browser and press "Add to home screen". This ensures that you get an icon on your home screen that you can use next time to open the app right away.

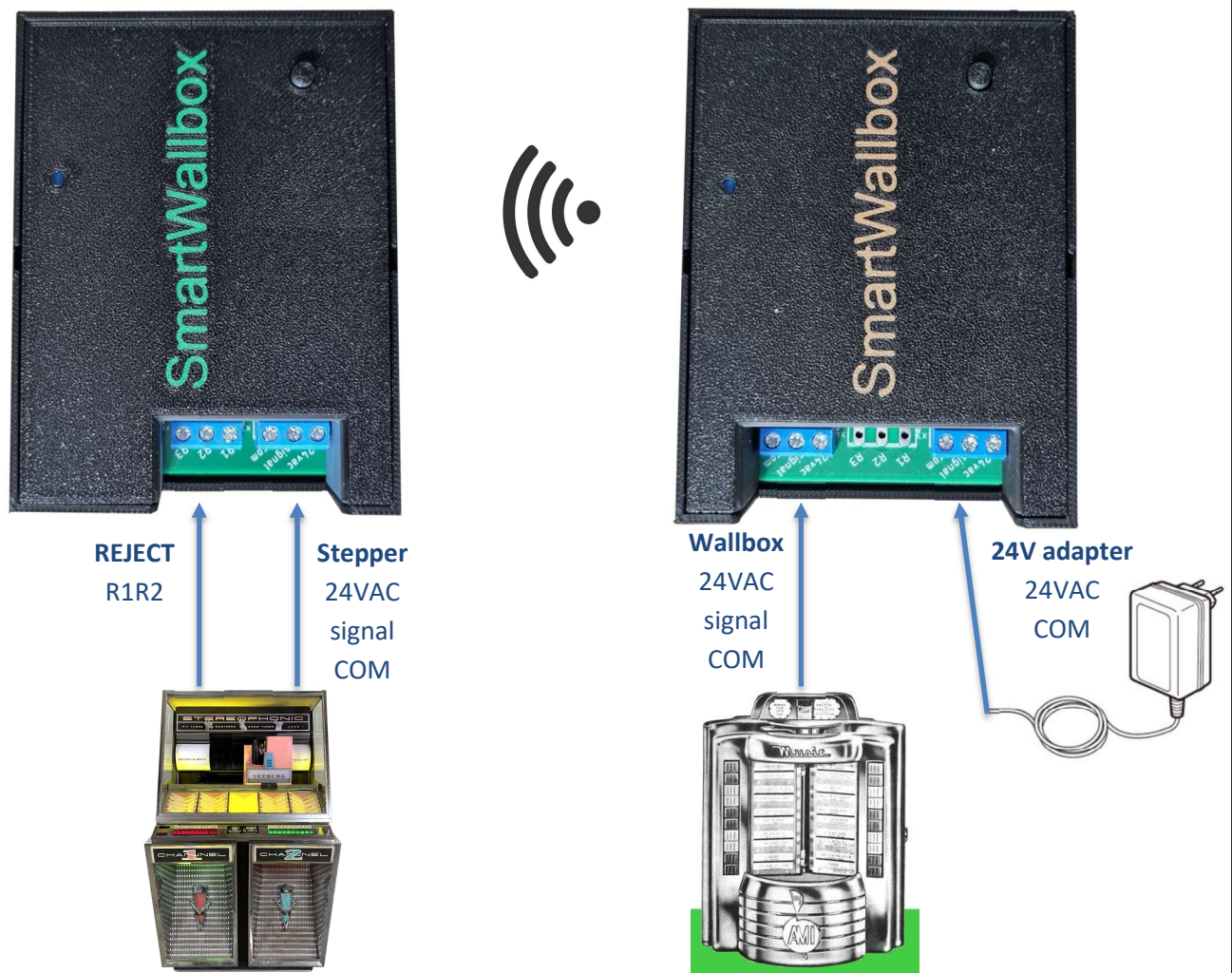


There is a small chance that the IP address **192.168.1.211** is not available or is already being used by another device in your Wi-Fi network. In that case, you can choose an IP address by changing the address in the IP address bar. Then press "**define new static IP**" and then you can open the WebApp with this new address.

The first two numbers in a home network are usually **192.168**, you don't have to change them. Try replacing the last address with a number between 200-254. If this doesn't work, try an address that is the range **192.168.0.[200-254]**.

Appendix B – Combi module

The Combi module consists of 2 modules. A basic module that connects to the jukebox and a second module that connects to the wallbox that can then communicate wirelessly with the jukebox.



The Wi-Fi settings and configuration of the base module are described in chapters 3-5.

First, install the 1st module as described in the manual and check whether you can make a selection with your smartphone.

If this works correctly, you can install the 2nd module for the wallbox. This is set up and configured in exactly the same way. The only difference is that the Wi-Fi network and IP address are different.

| | 1st module (green) | 2nd module (orange) |
|--------------------|---|---|
| AP Wifi network | SmartWallBox | WirelessWallbox |
| AP IP address | 192.168.4.1 | 192.168.4.1 |
| Dynamic IP address | http://smartwallbox.local | http://wirelesswalbox.local |
| Static IP address | 192.168.1.211 | 192.168.1.212 |

1. Press the button on the SmartWallBox module.
2. Open the **WirelessWallBox** Wi-Fi network on your phone or computer.
3. Open a web browser and enter the IP address **192.168.4.1**
4. Select the correct Wi-Fi network and press **connect**.
5. Restart the SmartWallBox module.|
6. Reconnect to your home Wi-Fi network with your phone.|
7. Open a web browser and enter **http://wirelesswallbox.local**.
8. Open the configuration menu and select the connected wallbox.

With the 2nd module, it is not necessary to put an icon on the home screen. The WebApp is only functional for the 1st module.

Appendix C – Troubleshooting

- **The app won't start.**

Check if the module is on (blue LED). Make sure that the phone and module are connected to the same Wi-Fi network. Reset the Wifi network (chapter 4)

- **The app is slow to start**

Go to the settings menu at the top right and open the "WiFi Strength" menu. The Wifi strength must be in the green area. Place the module in a different place outside the jukebox to see if the range improves. (This menu is only available from version 5.5.0)

- **Jukebox makes the wrong selection**

Check that the wires are connected correctly. 24VAC and COM should not be interchangeable.

Check in the configuration menu if the correct jukebox is selected (chapter 6).

Check if the Excel file is correct.

- **Jukebox does not make a selection**

If the relay in the SmartWallbox module switches, check the stepper in the jukebox for correct operation (possibly connect with a wallbox)

- **REJECT does not work.**

Check that the 2 wires are correctly connected to the Reject switch of the jukebox. A number of Wurlitzer jukeboxes require a special cable. (See website).

- **Wireless wallbox does not work**

Check that the receiver and transmitter module are both connected to the same Wi-Fi network. See if the app can be opened on the Wireless Wallbox module.

<http://wirelesswallbox.local>

If not, reinstall the system.